

**JACKSON COUNTY
GEODETIC CONTROL**

JN 97009

MAP PROJECTION: LAMBERT

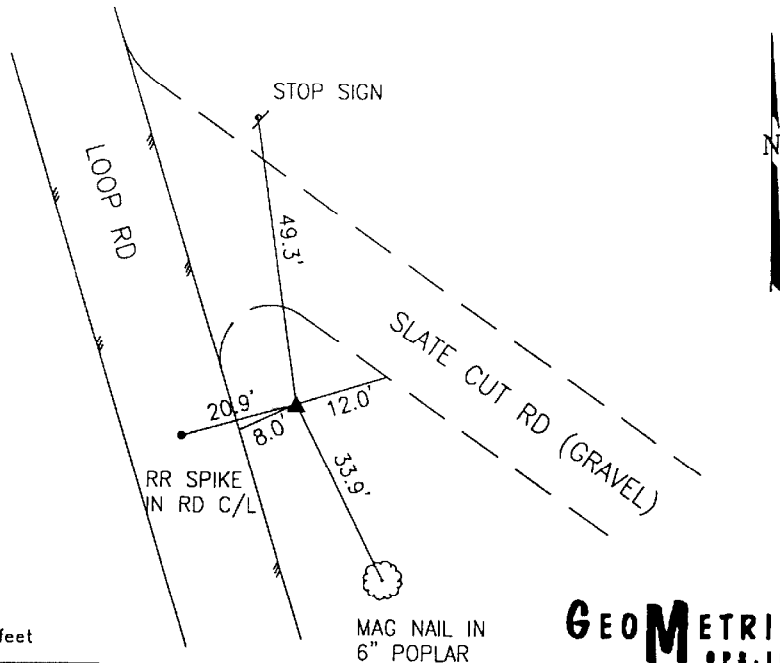
ORDER OF SURVEY: FIRST

NAD 83/86 * OHIO STATE PLANE COORDINATE SYSTEM * SOUTH ZONE * U.S. SURVEY FOOT

COUNTY	NAME OF STATION		YEAR
JACKSON	27 SLATE		1997
N: 422787.461	E: 1942339.067	LAT: 39°09'38.80876"	LONG: 82°35'32.14797"
GRID FACTOR: 0.99994348	SEA LEVEL FACTOR: 0.99995535	ϕ ANGLE: -0°03'30.75"	
ESTABLISHED BY: GeoMetrics GPS, INC.	DISTANCES AND DIRECTIONS TO REFERENCE MARKS AND PROMINENT OBJECTS OBSERVED AT STATION		
	OBJECT	DISTANCE	AZIMUTH
VERTICAL DATUM NAVD 88	(SEE SKETCH BELOW)		
ELEVATION (FT.) 933.43			
VERTICAL ORDER: THIRD			

DESCRIPTION OF STATION: The station is a standard Jackson County, Ohio aluminum survey disk stamped SLATE 27 1997 set flush with the ground in the top of a reinforced poured-in-place concrete monument located in Jackson County, Ohio about 3.5 miles north northeast of Coalton. To reach the station from the intersection of State Route 93 and Route 28 (Main Street) in Coalton proceed northwest along Route 28 for a distance of 0.9 miles to its intersection with Route 43 (Glen Nell Road). Continue ahead and proceed northwest along Route 43 for a distance of 3.4 miles to its intersection with State Route 327. Turn right and proceed southeast along State Route 327 for a distance of 0.2 miles to its intersection with Route 32 (Loop Road). Turn left and proceed northeast along Loop Road for a distance of 1.9 miles to its intersection with Slate Cut Road and the station on the left, in the northwest corner of a traffic island.

SKETCH OF STATION:
APPROX. SCALE: 1" = 30'



THIS SURVEY DATA PREPARED
USING 1 meter = 3.28083333 feet

PREPARED BY: CEN	3/97
CHECKED BY: DAR	3/97

GEO METRICS
GPS, INC.

355 BUTLER ROAD
FREDERICKSBURG, VIRGINIA
(540) 372-3499